

Wildlands and Woodlands



Farmlands and Communities

Broadening the Vision for New England



Today's Participants (in order)

Kathy Lambert - Science & Policy Project Director, Harvard Forest, Harvard University

Jonathan Thompson - Senior Ecologist, Harvard Forest, Harvard University

David Foster - Director, Harvard Forest, Harvard University

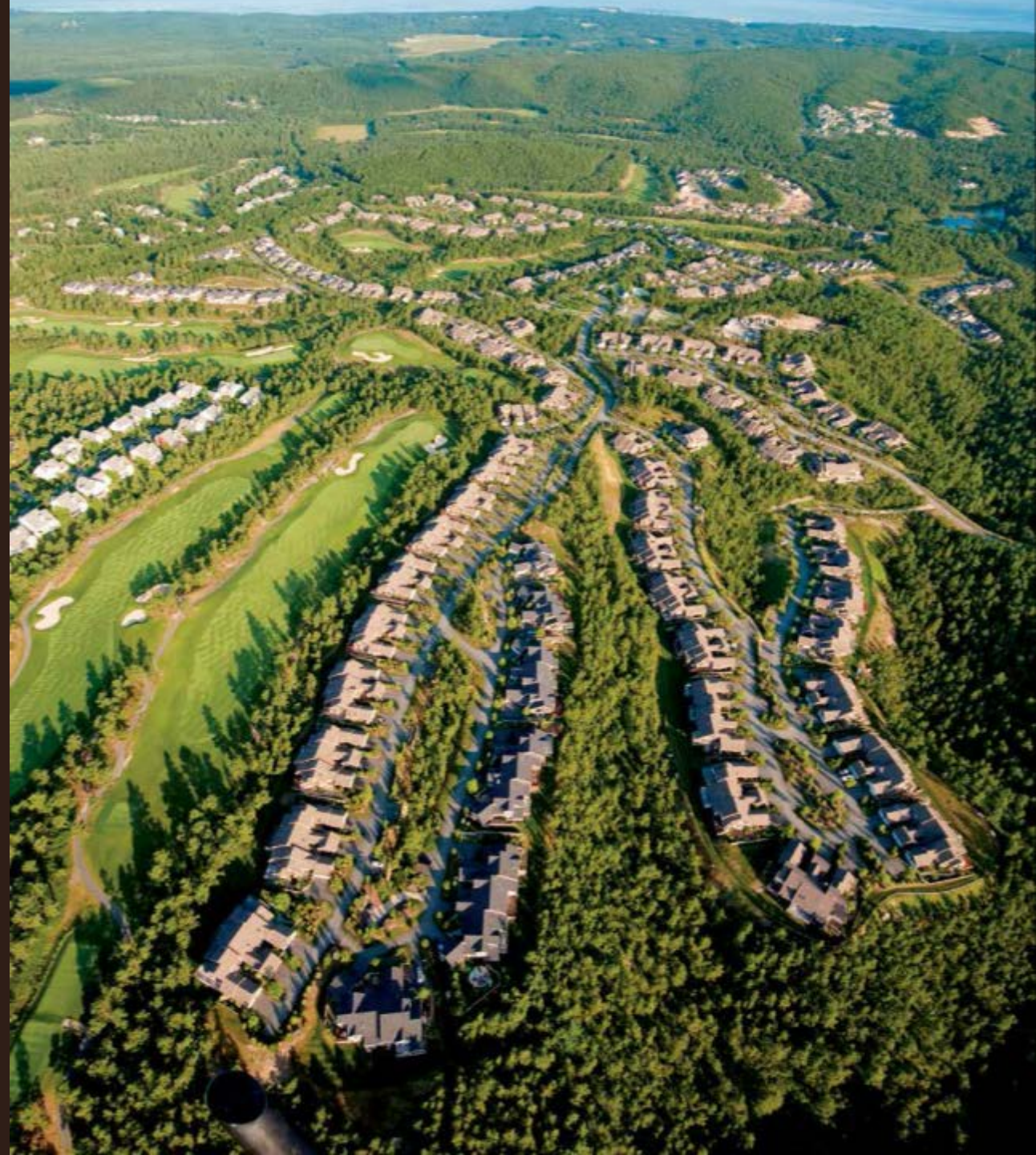
Spencer Meyer - Senior Conservationist, Highstead (Q&A)

The Upshot

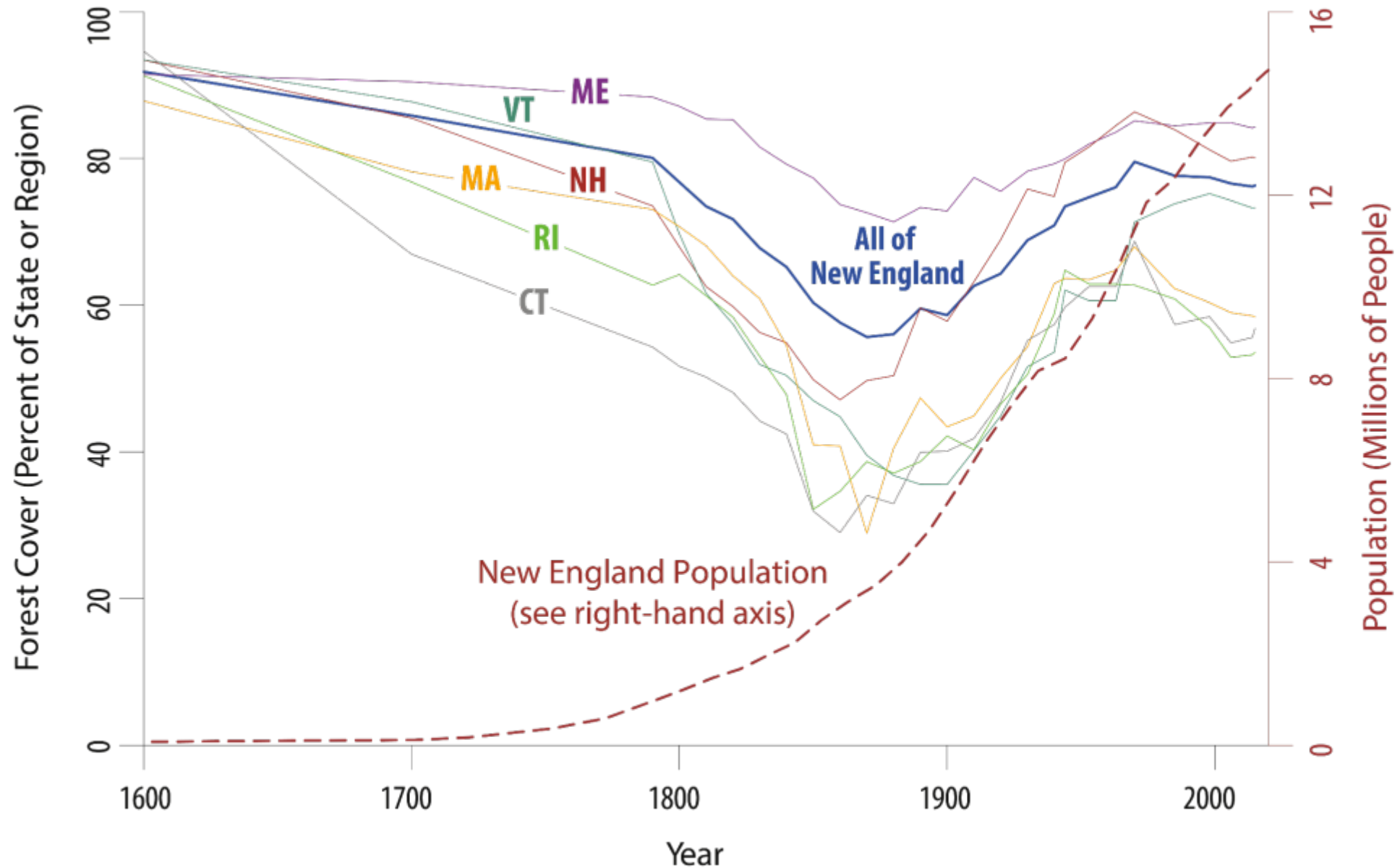
1. Threats to the New England landscape persist
2. Despite threats, a broadened *Wildlands & Woodlands* Vision still attainable
3. Achieving vision will require tripling the pace of conservation, supporting sustainable use, growing smarter to reduce forest loss
4. Hopeful signs include growing capacity, strong interest by private landowners, historical track-record of increasing conservation

Threats to the New England Landscape Persist

Jonathan
Thompson



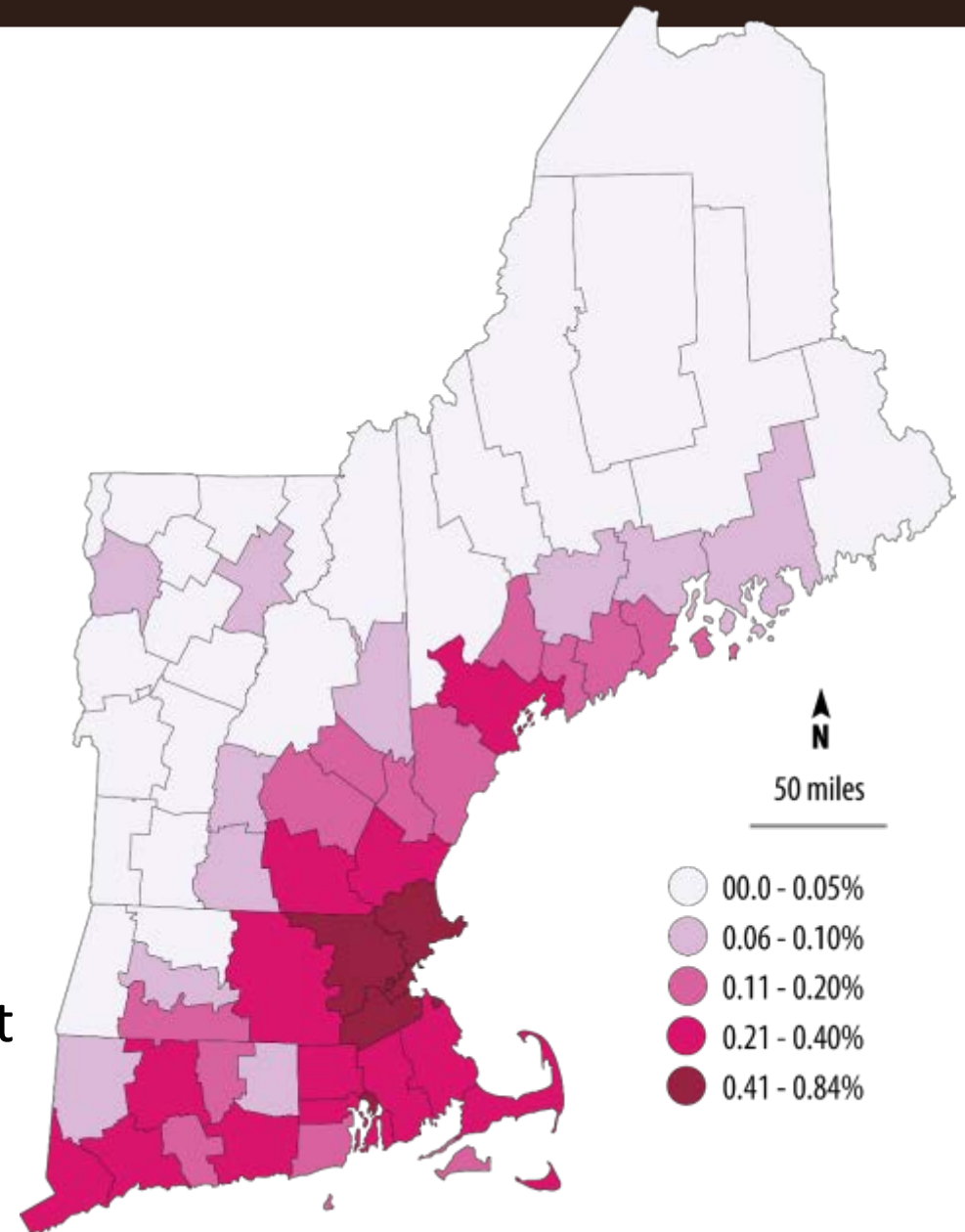
New England Forest Cover Has Peaked and is Declining



24,000 Acres of Forest Lost to Development Each Year

State	Average annual forest loss (acres)
CT	3,746
VT	1,493
NH	4,926
MA	7,078
ME	6,154
RI	803

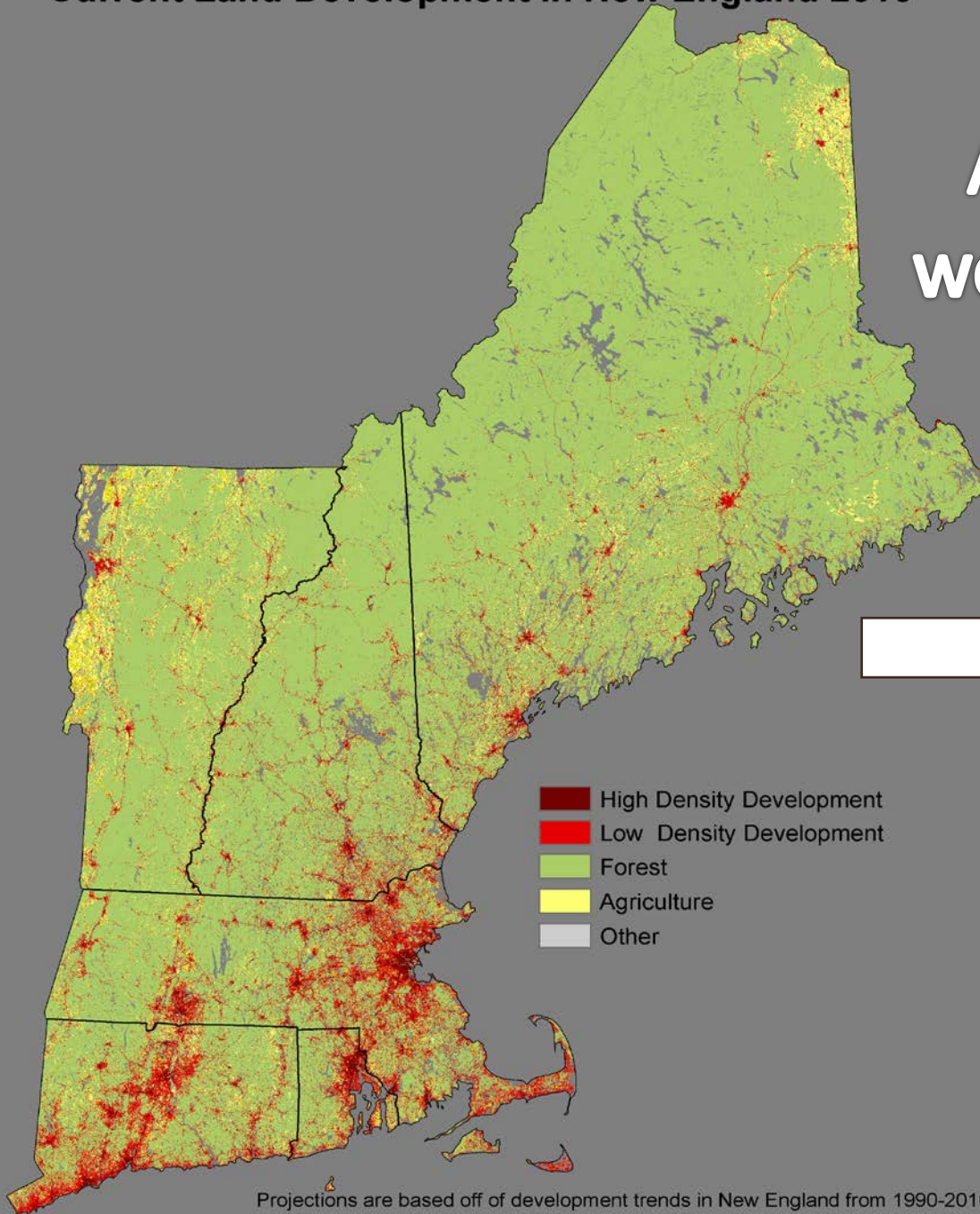
54% due to low-density residential development



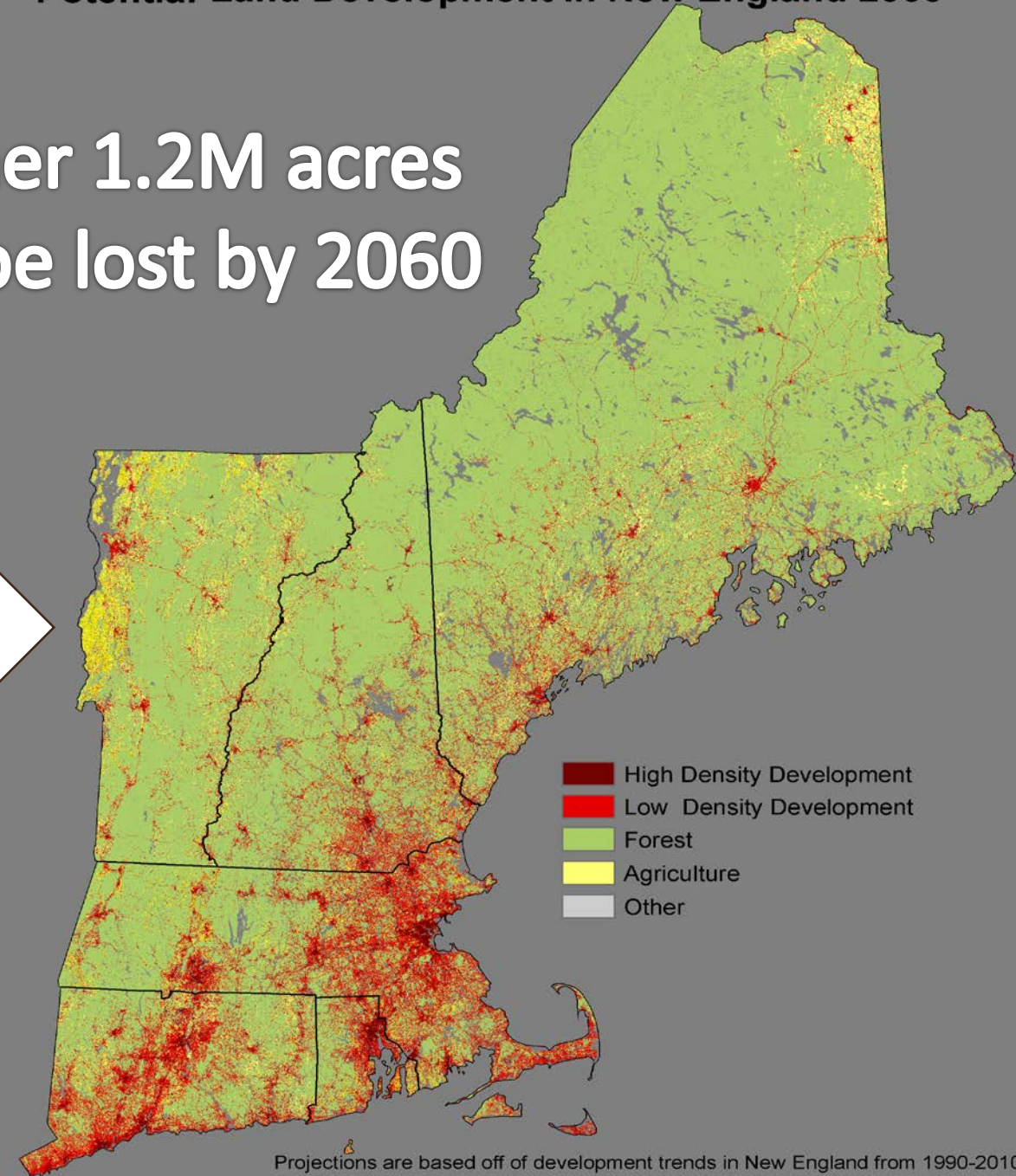
Current Land Development in New England 2010

Potential Land Development in New England 2060

Another 1.2M acres
would be lost by 2060



Projections are based off of development trends in New England from 1990-2010
For Source Data: <http://www.wildlandsandwoodlands.org/vision/ww-vision-reports>



Projections are based off of development trends in New England from 1990-2010
For Source Data: <http://www.wildlandsandwoodlands.org/vision/ww-vision-reports>

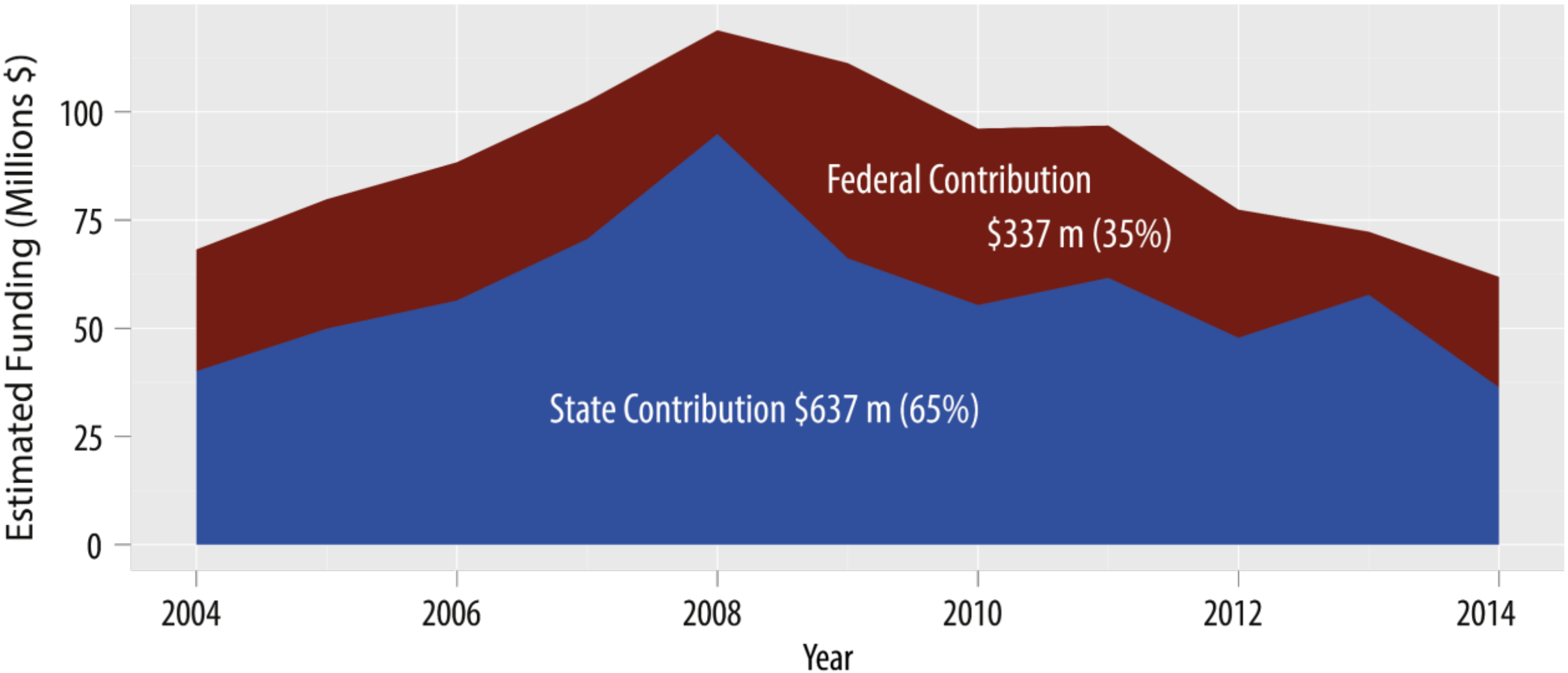
Land Use Larger Threat to Region's Ecosystems than Climate Change



Consequences for...

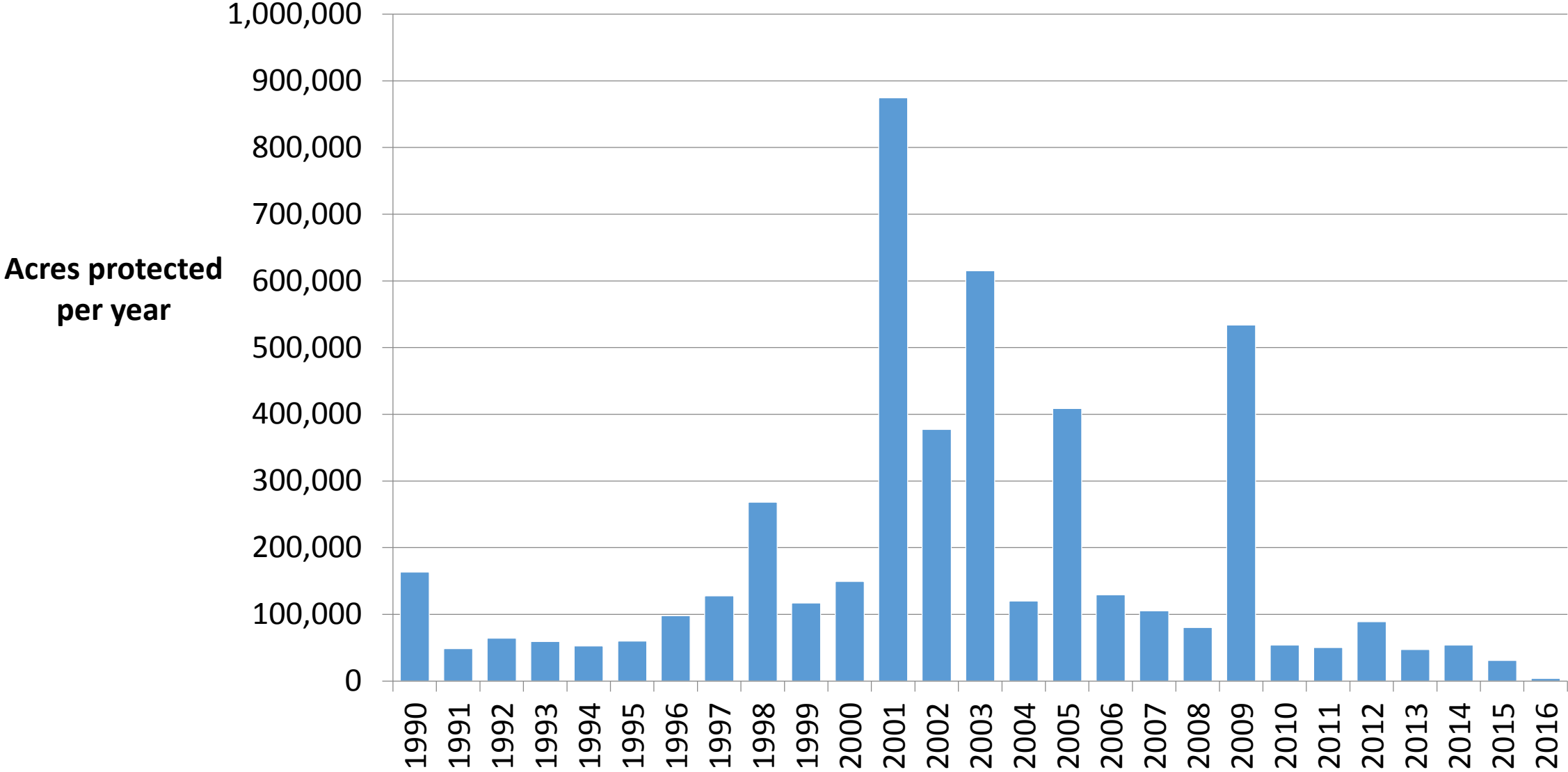


Public Funding for Land Conservation is Declining



Based on Buchanan 2016, Trust for Public Land

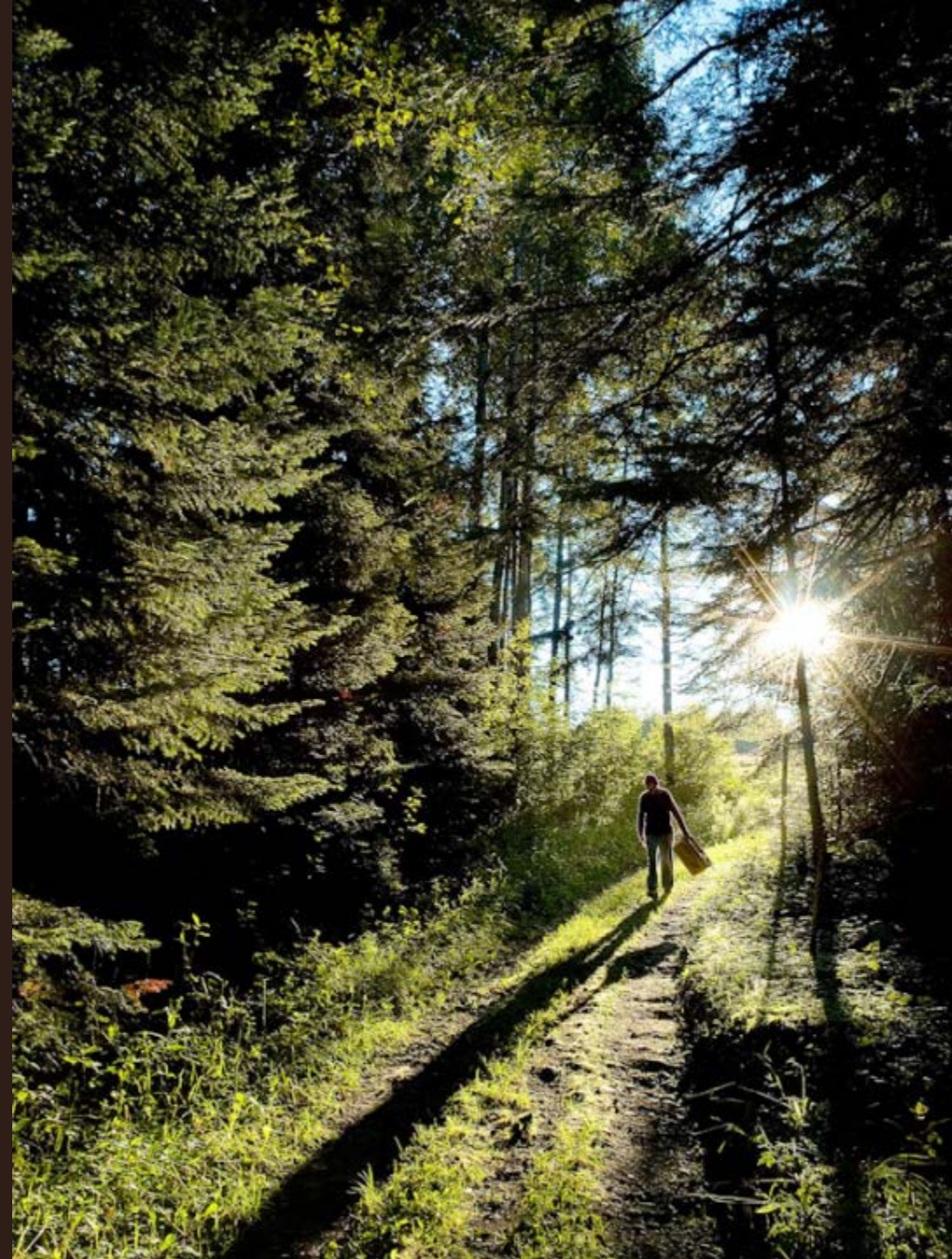
Rate of Land Conservation is Declining



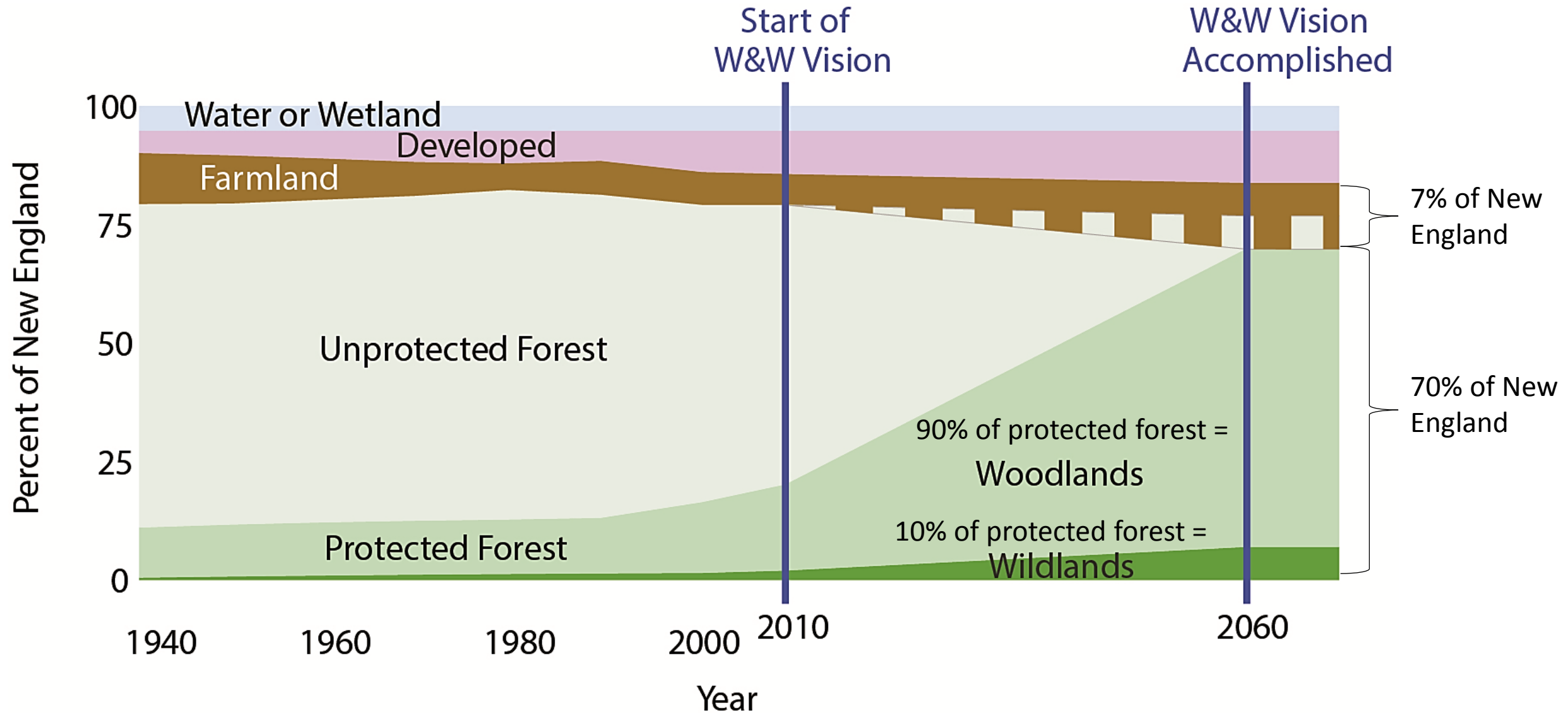
Data sources: PAD-US-CBI 2016, TNC 2015, NCED 2016

A bold vision for
the New England
landscape is still
attainable

David Foster



Wildlands and Woodlands Vision 2060



New 2017 Report Broadens the Vision





Many Benefits for People & Nature



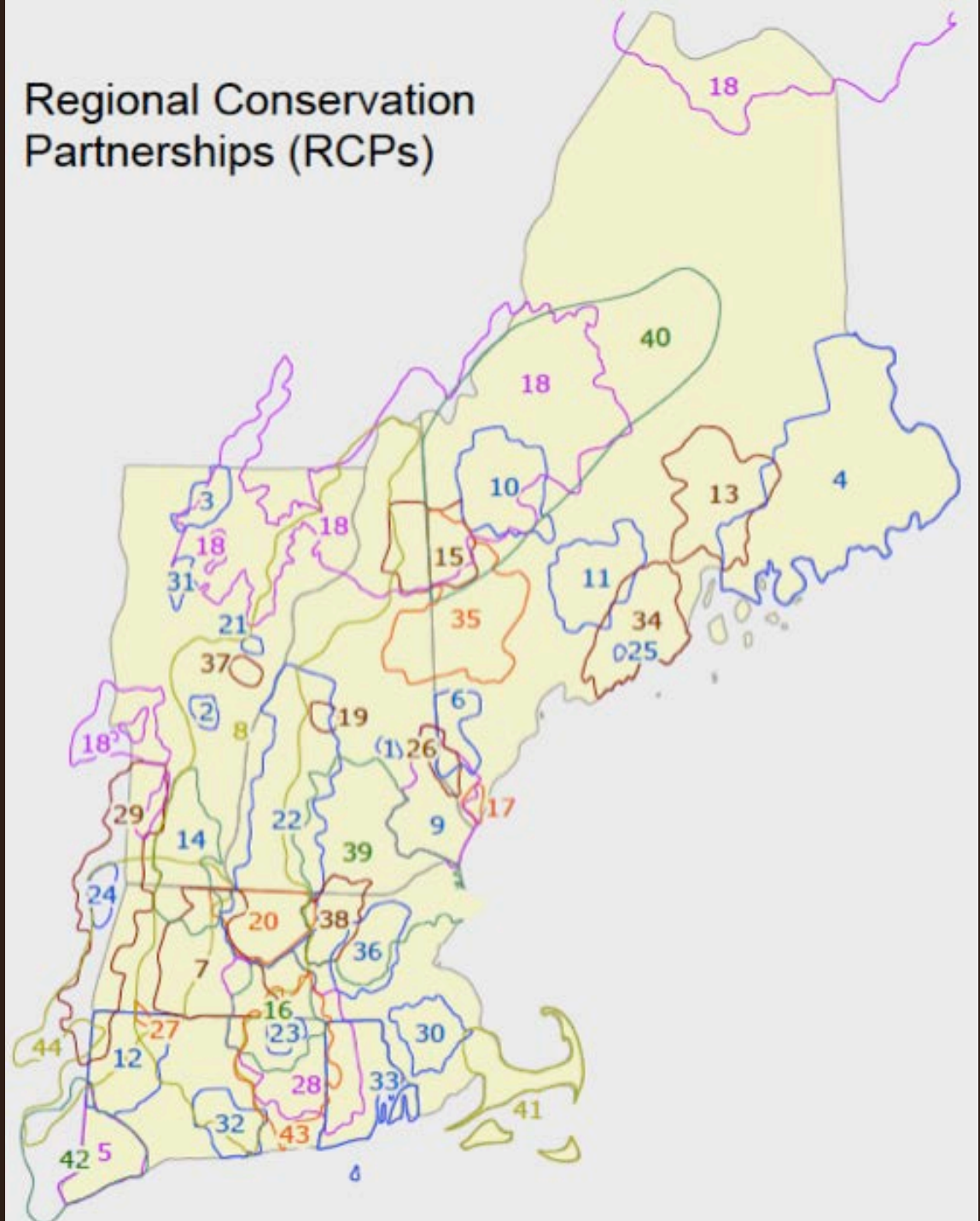
Achieving the Wildlands & Woodlands 2060 Vision

1. Accelerate land protection
2. Increase conservation funding
3. Sustainably manage more land
4. Support strong rural economies
5. Grow smart to reduce forest loss
6. Reduce consumption & conserve resources

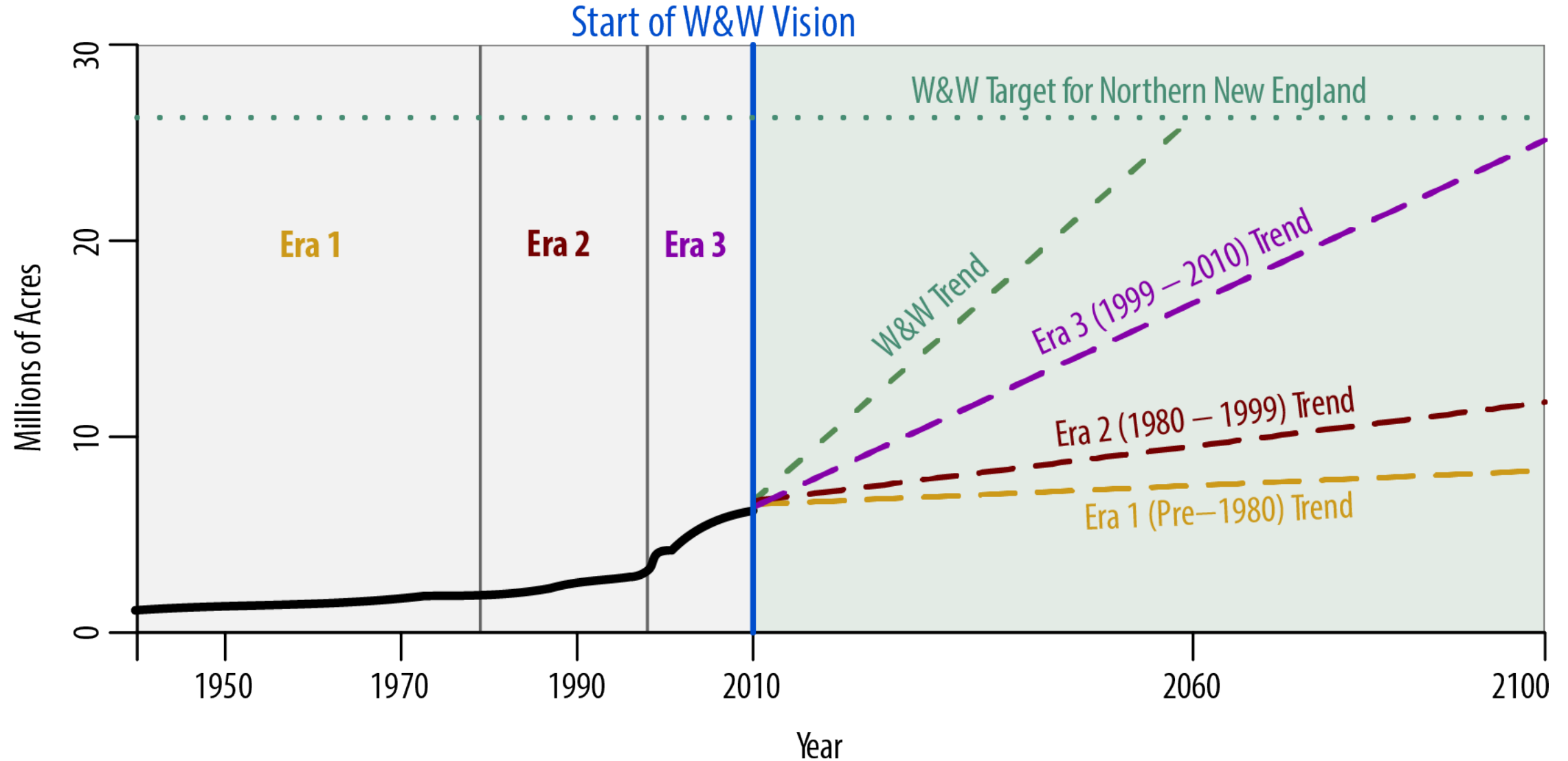


Conservation Capacity Continues to Grow

Regional Conservation Partnerships (RCPs) have increased from 4 to 43 since 2000 and now serve more than 60% of the region



Tripling the Pace of Conservation



Press *1 now to ask a question

To arrange an interview contact:

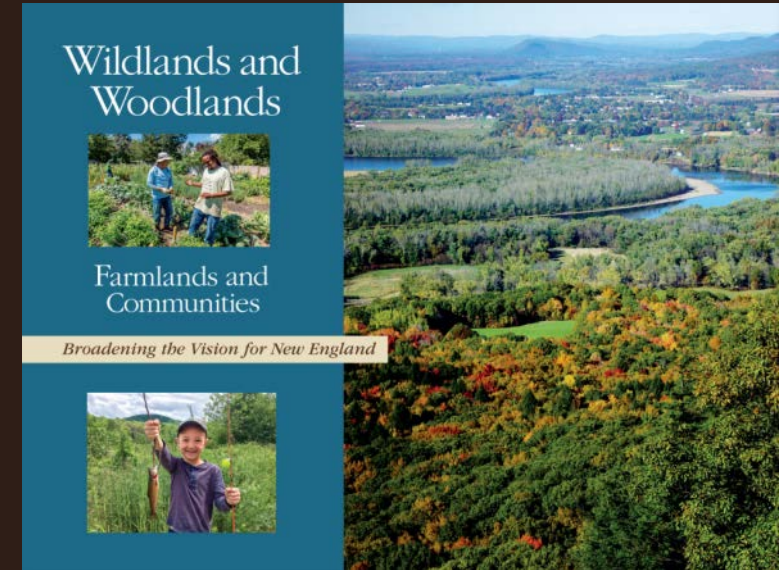
Lisa Capone lcapone@sloweymcmanus.com

- 617-523-0038, ex. 4(o)
- 781-589-0326 (c)

Hannah Robbins, hannah_robbins@harvard.edu

- 978.756.6181 (o)
- 360.670.9139 (c)

wildlandsandwoodlands.org/vision/ww-vision-reports
@WWConserve



Wildlands and Woodlands



Farmlands and Communities

Broadening the Vision for New England



Back pocket slides

Wildlands & Woodlands Vision

1. At least 70% of New England conserved as forest (30M acres)
 - 90% of these lands managed as Woodlands (27M acres)
 - 10% of these lands managed as Wildlands (3M acres)
2. 7% of New England conserved as farmland (3M acres)
3. Smart growth to slow the pace of forest and farm conversion

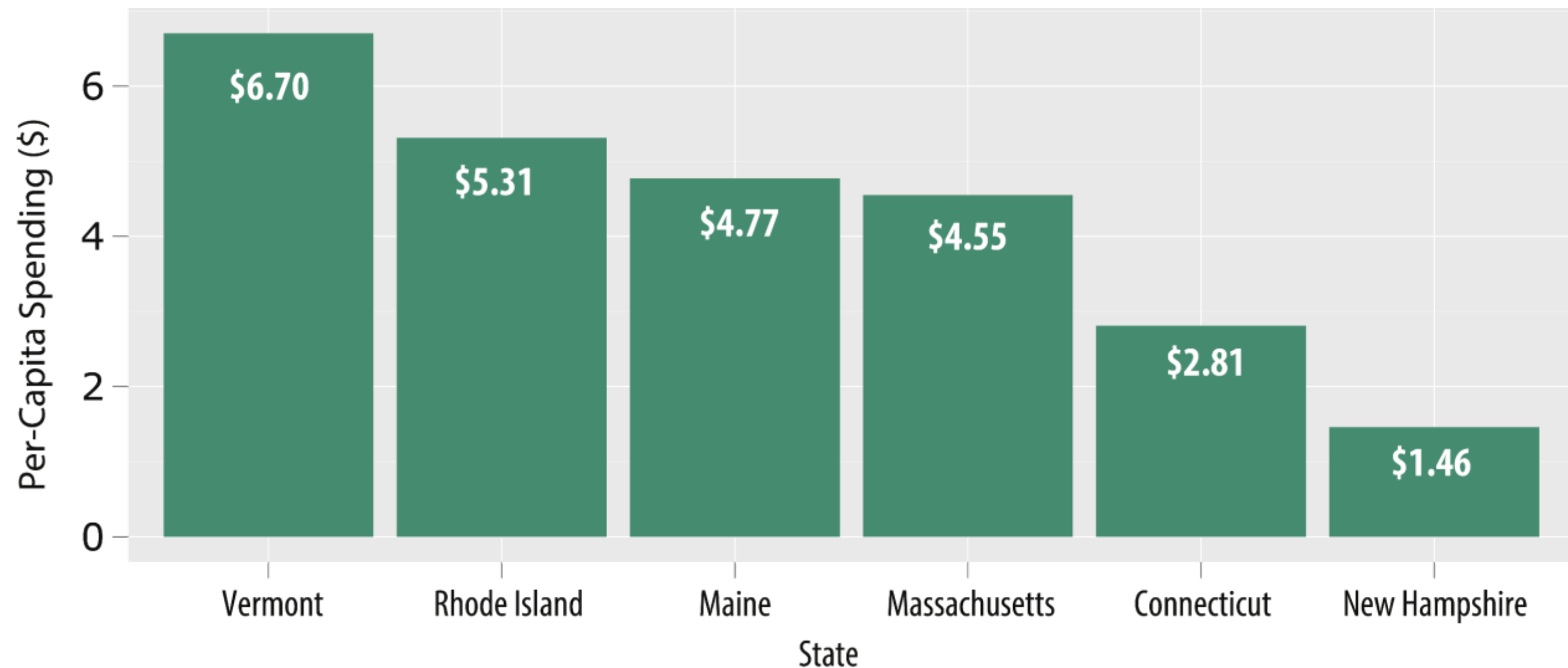
State	Average Annual Forest Loss (Acres) (1990-2010)
CT	3,746
VT	1,493
NH	4,926
MA	7,078
ME	6,154
RI	803
New England	24,200

State	Average Acres of Forest Conservation per Year (1990-2010)
CT	5,201
VT	20,560
NH	33,404
MA	14,132
ME	139,730
RI	1,994
Total	215,021

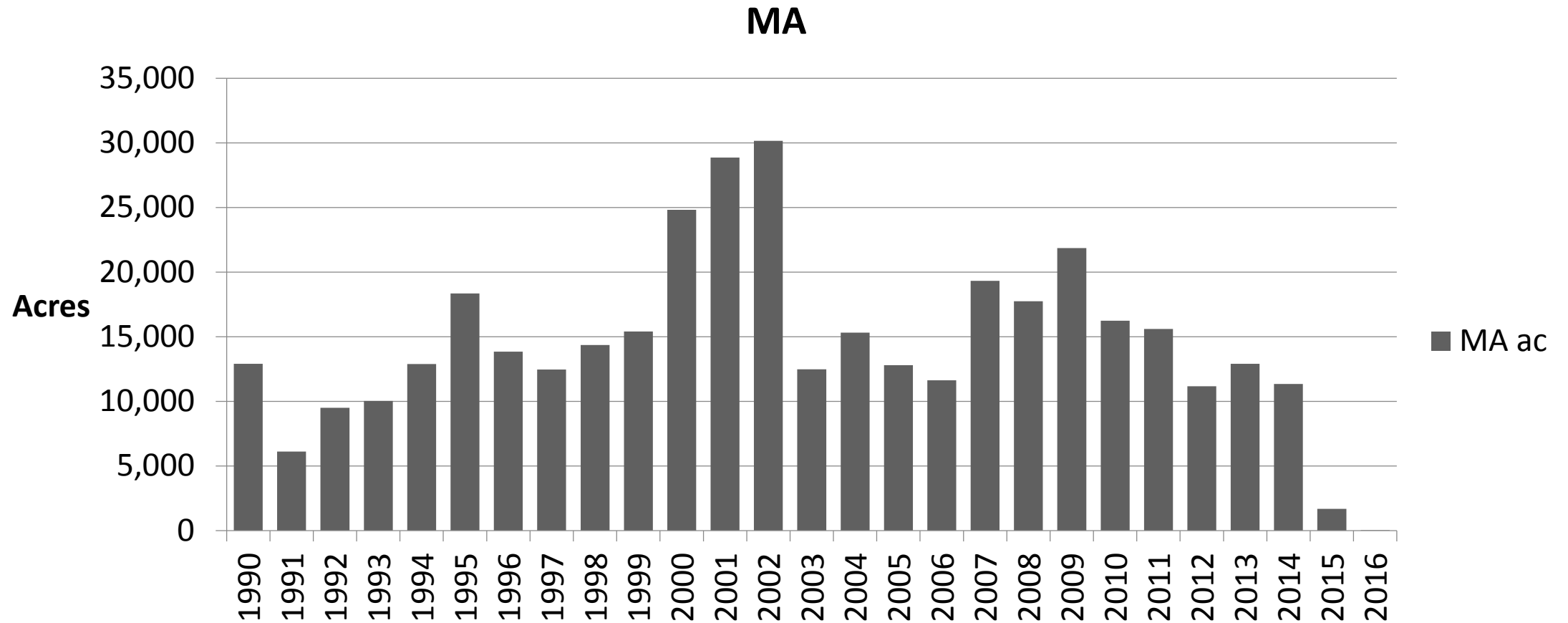
Percent of State Conserved

State	Forest (% conserved)	Agriculture % conserved	Total % conserved
CT	14	0.95	15.0
MA	22	2.05	24.0
ME	19	0.07	19.1
NH	30	0.49	30.5
RI	18	2.01	20.0
VT	21	2.15	23.2
NE	21	0.78	21.8

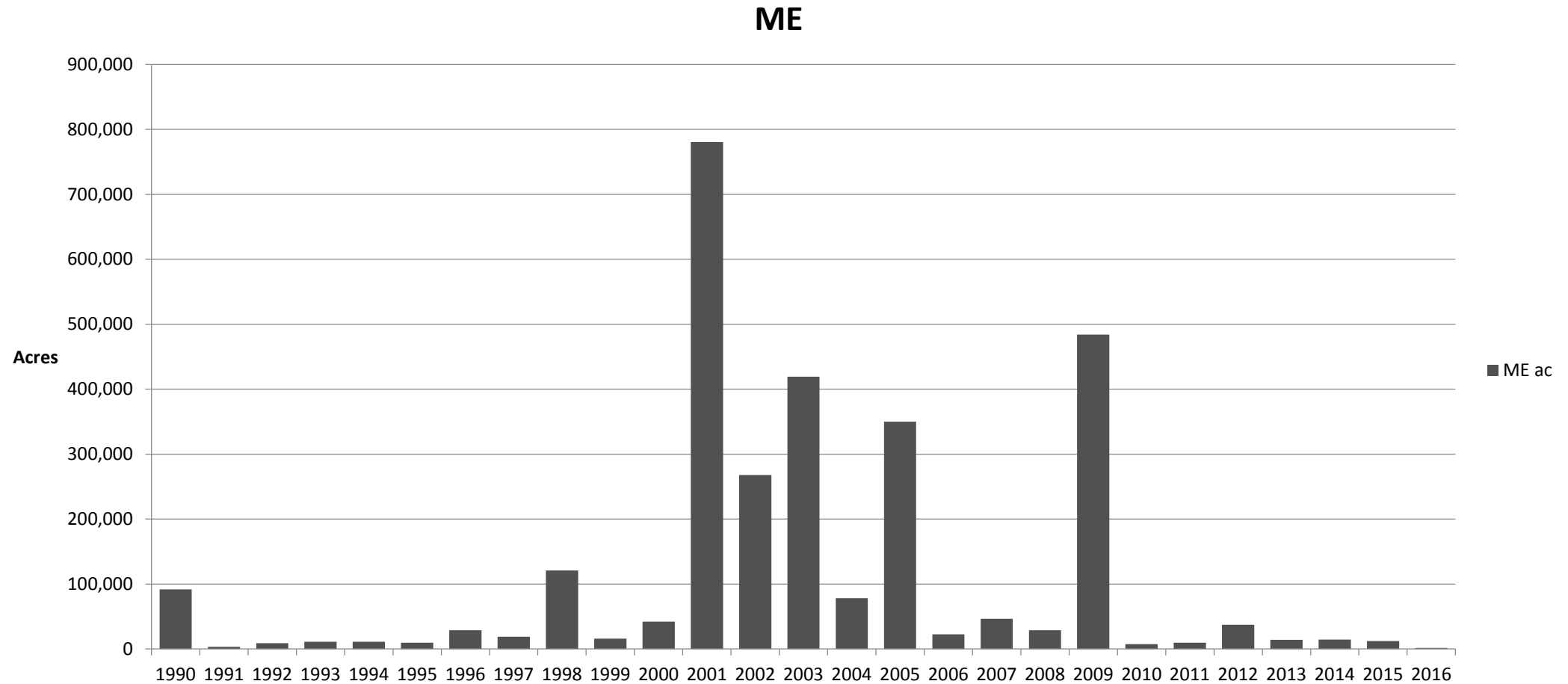
State Conservation Funding in New England, 2004-2014



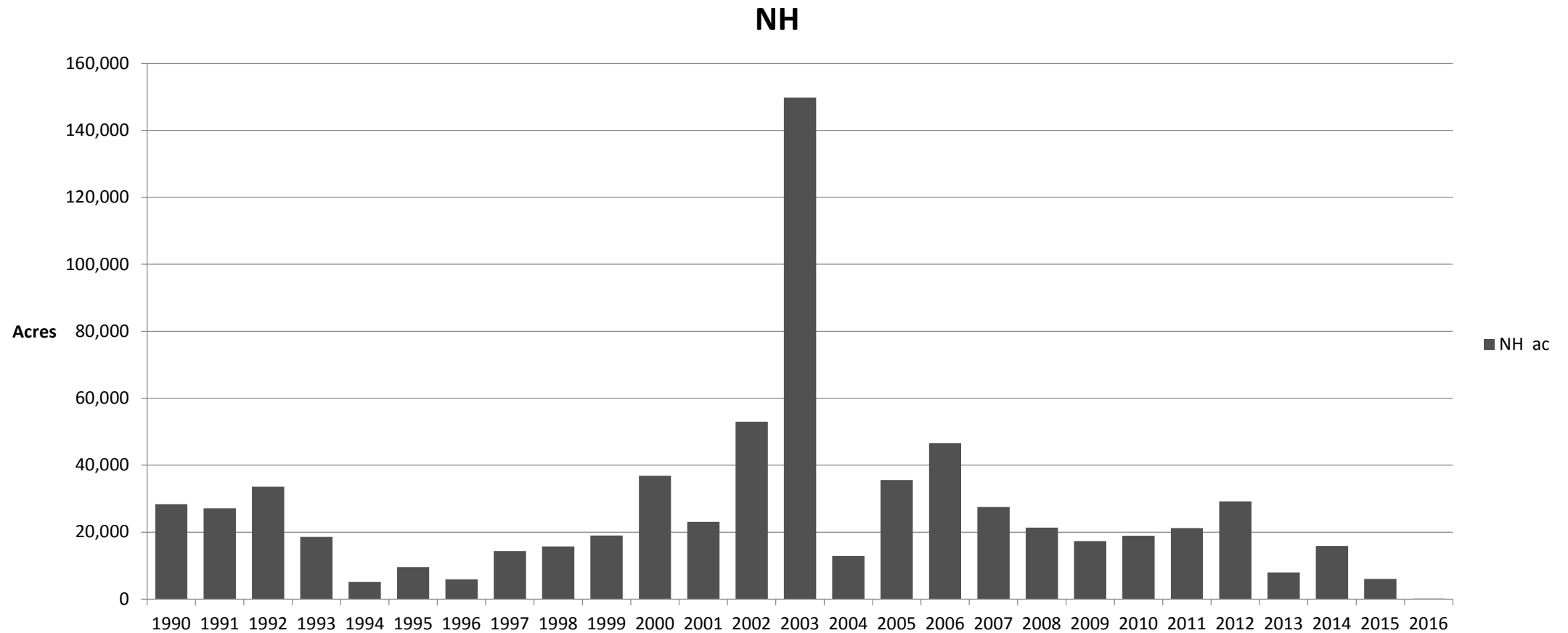
Acres of Land Conserved Per Year



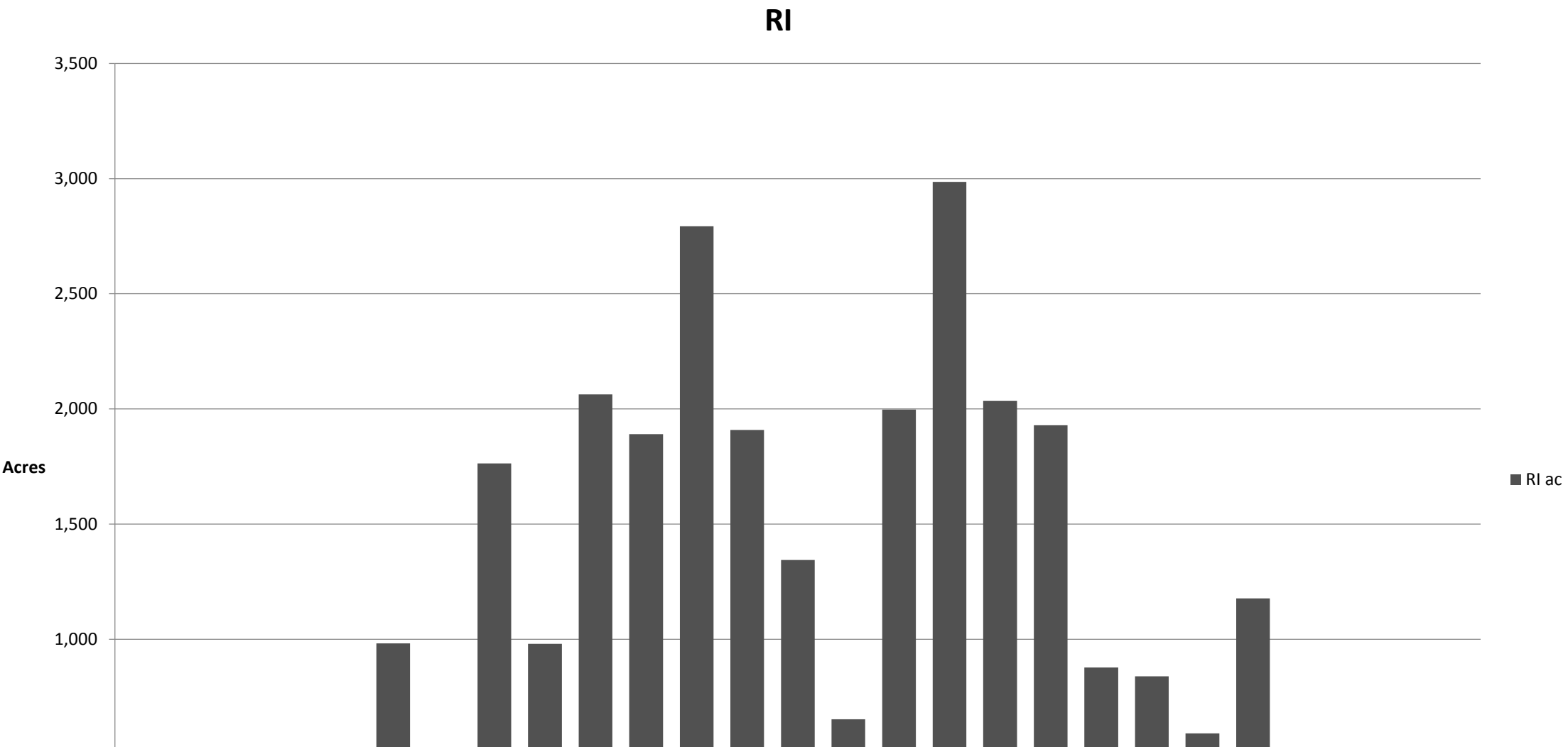
Acres of Land Conserved Per Year



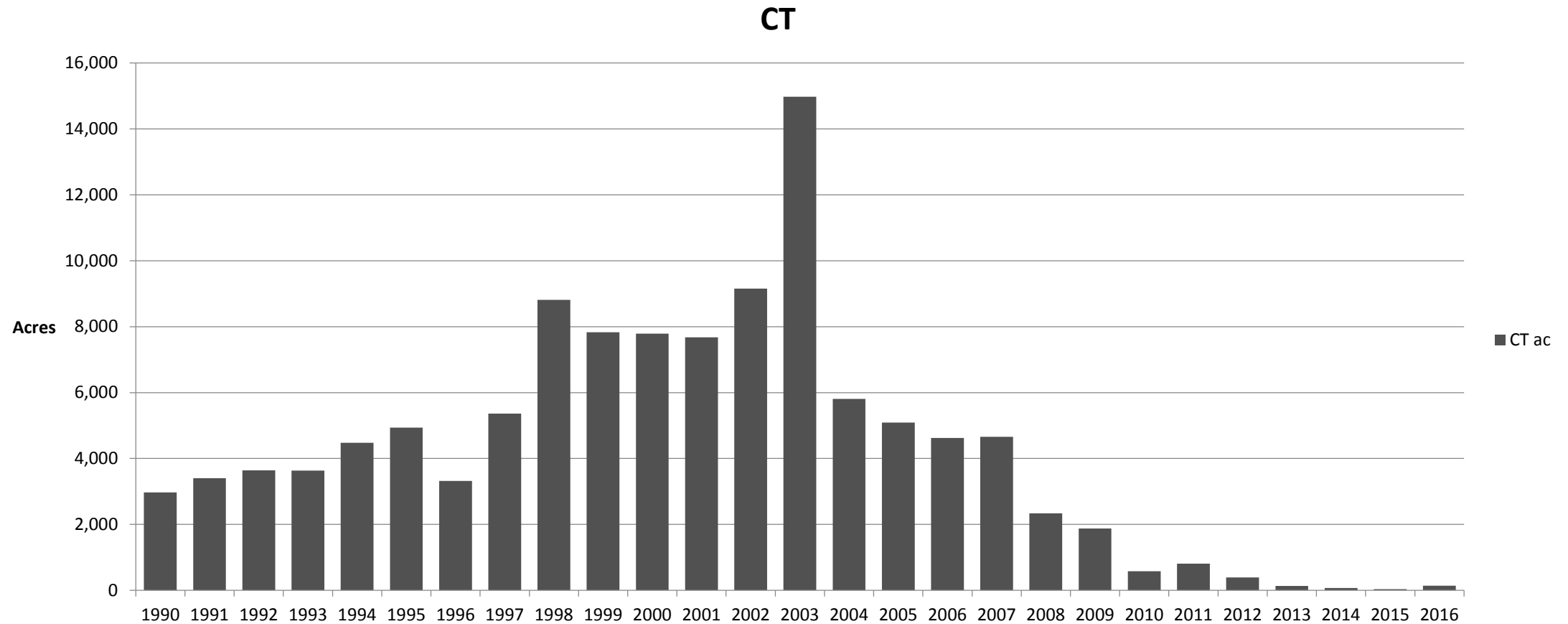
Acres of Land Conserved Per Year



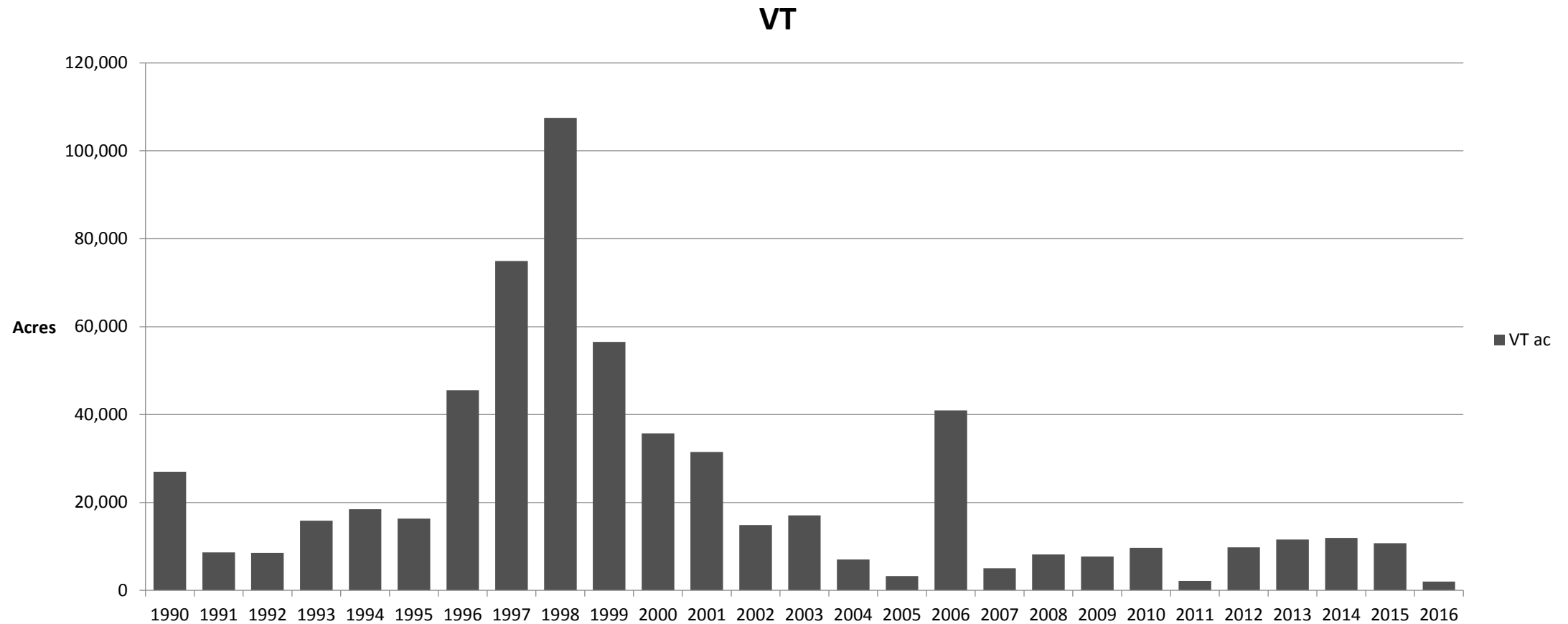
Acres of Land Conserved Per Year



Acres of Land Conserved Per Year



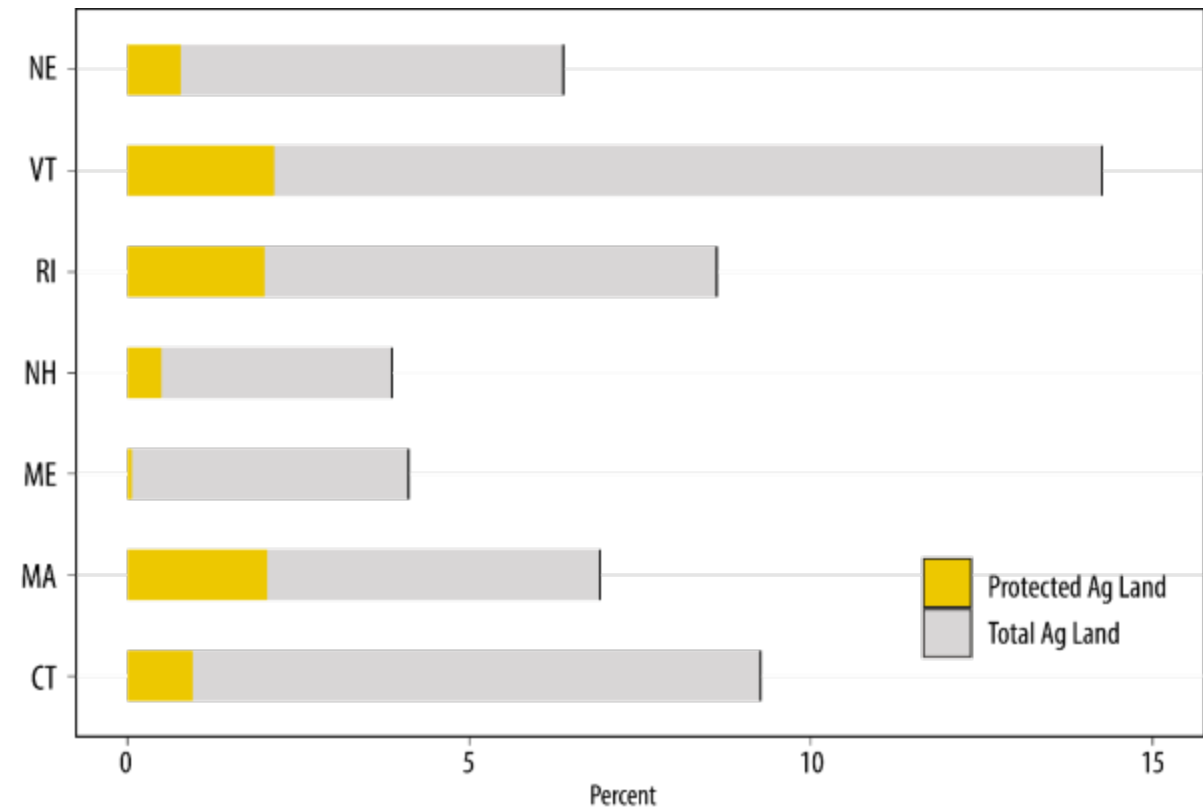
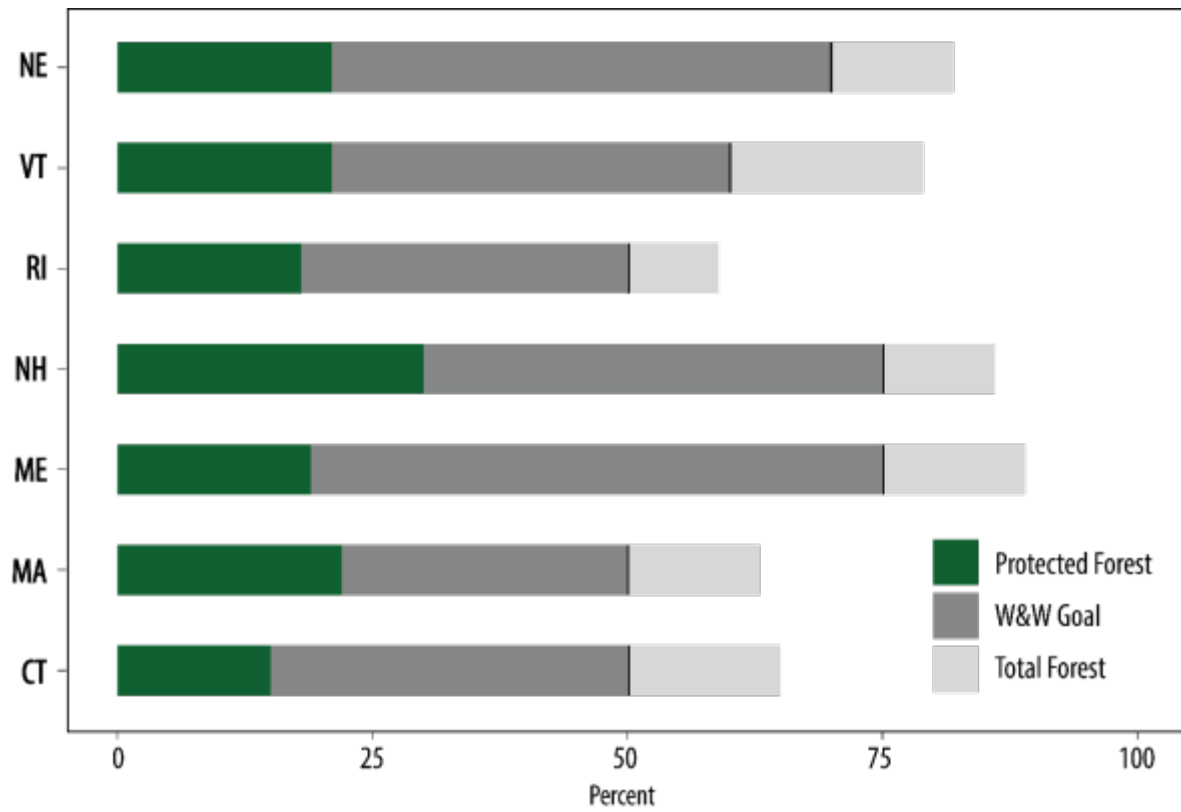
Acres of Land Conserved Per Year



Policy Opportunities for Gaining Ground

1. Safeguard or restore state funding for land conservation
2. Incorporate land use and conservation into state climate action plans
3. Expand the use of forest offsets to meet Regional Greenhouse Gas Initiative targets
4. Integrate land into infrastructure investment plans
5. Support conservation, forestry, and farming funds in 2018 Farm Bill

Current & Future Land Conservation

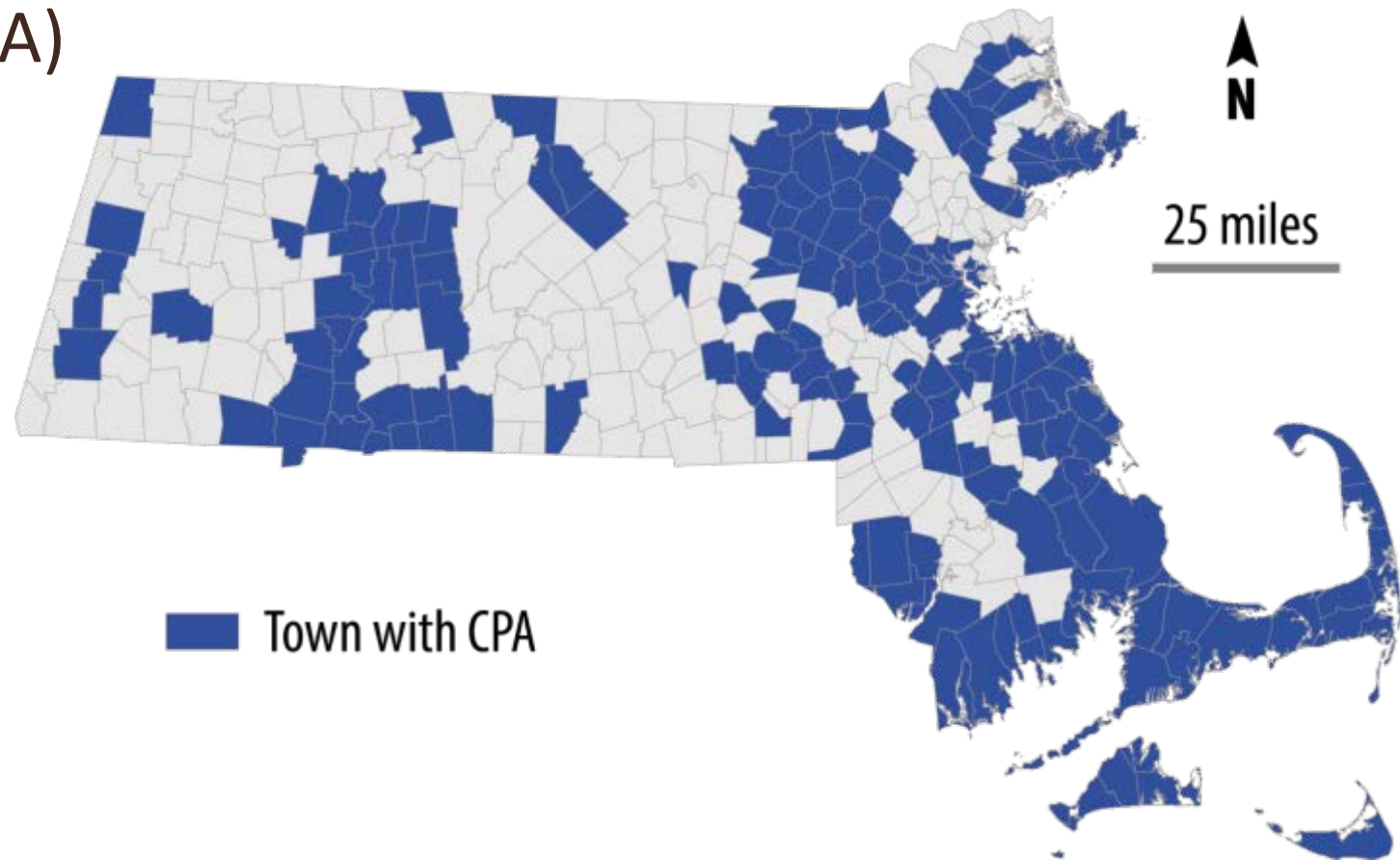


Hopeful Sign: Local Support for Conservation Funding Growing

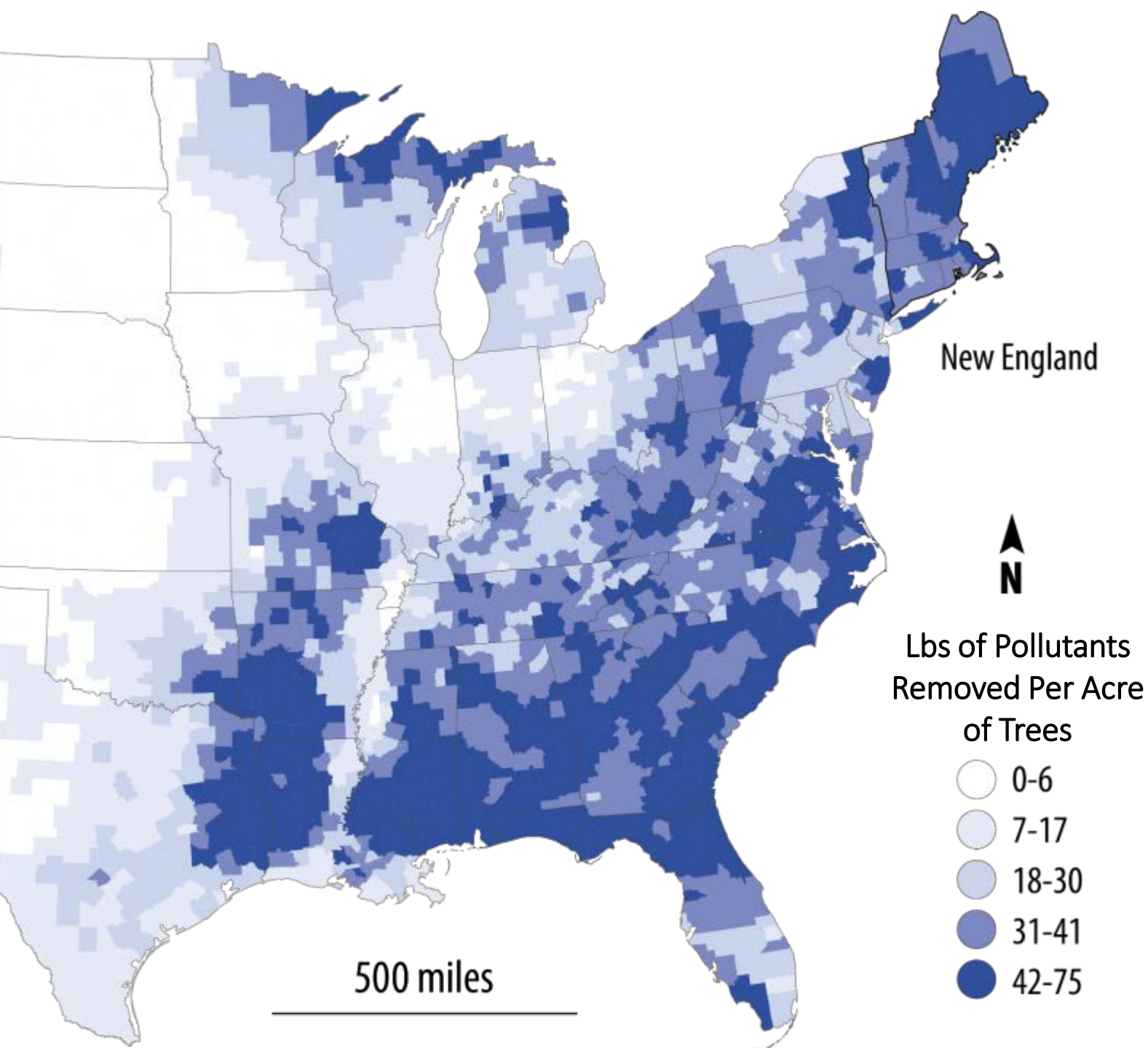
Community Preservation Act (CPA)

Adopted by 11 cities and towns,
including Boston in 2016

Brings total to 173 – half the
towns in MA



Forests Improve Regional Air Quality

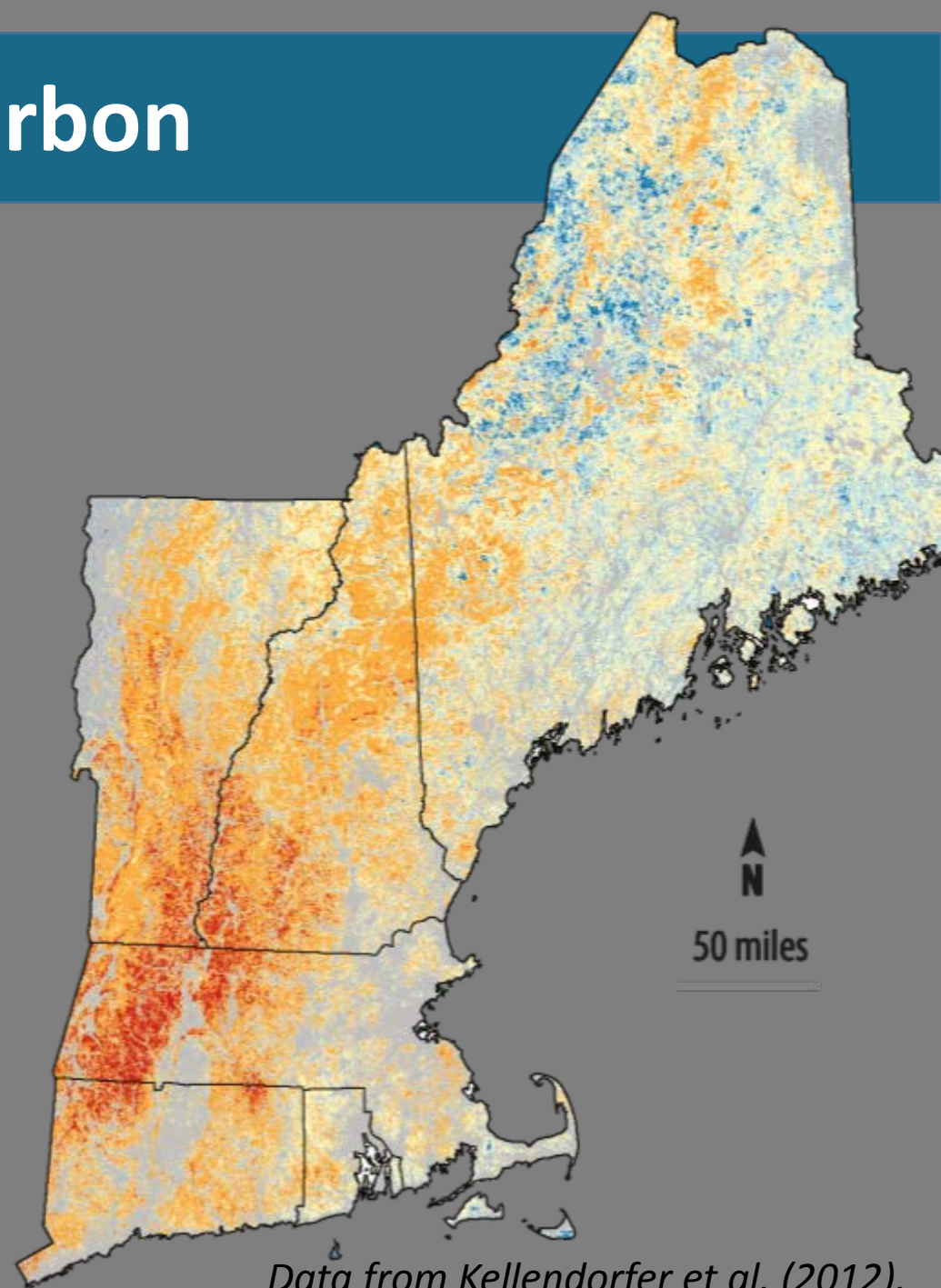


Adapted from Nowak et al. 2014

Forests Store Carbon



Total Aboveground
Carbon (Mg/Ha)



Data from Kellendorfer et al. (2012).